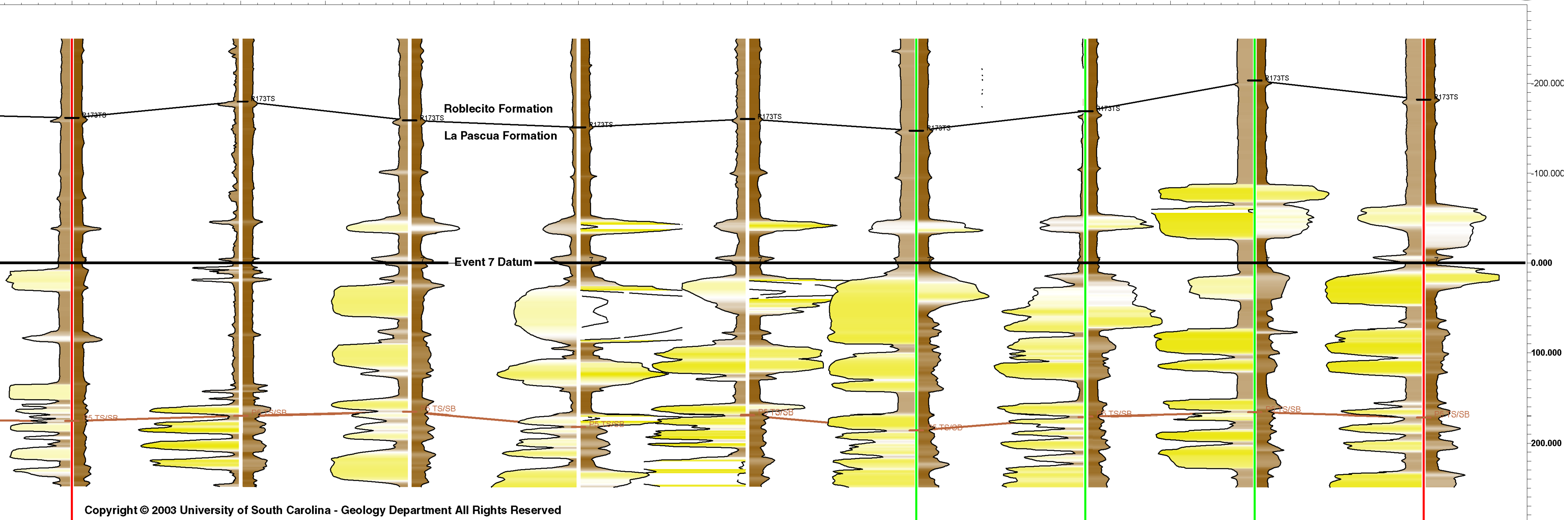




me342 3280 ft me161 8919 ft me440 385 ft me315 1001 ft me230 1211 ft me425 879 ft me316 3615 ft me417 4886 ft me433

20. 22.5 25. 27.5 30. 32.5 35. 37.5 40.



Copyright © 2003 University of South Carolina - Geology Department All Rights Reserved

Top is contact between La Pascua and Roblecito Formations (Reistroeffler 2001). Depths in feet relative to the "Event" 7 datum. Section Assembled and interpreted by P. Lake, C. G. St.C. Kendall and J. Reistroeffler - July 2003. For academic and educational puposes only.